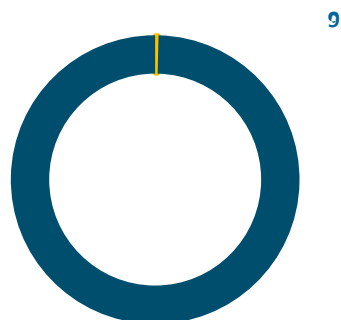
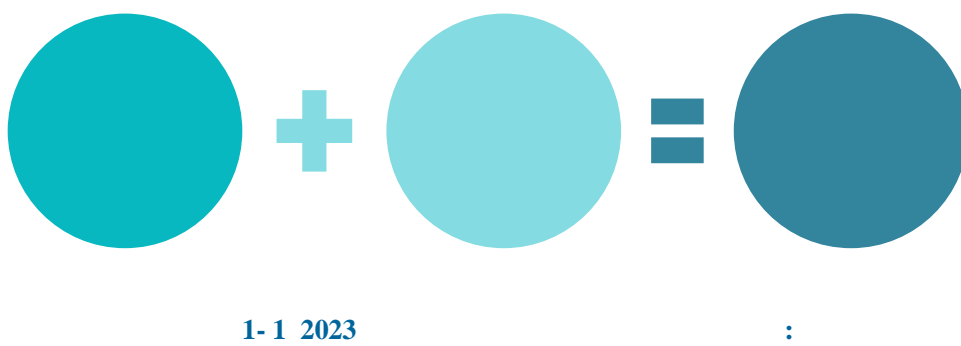


2023 4641 4624 99.63%
17 0.37%



1-2 2023

2023

15 37

13.58% 11.12%

1-1 2023

		%†	& +
		%	%*%
		*	&
		%&	
			&
"		&	&
		+	%
			%
			&%†
			%
			%
		%	
		%	
		%&	%
		%	%
			%&
		&	*
		&†	* *
		&	* +
		%	%%
		*	*
		*	
			%†
		&	*
		&*	%
		*	
		%+	
			%%†
			% &
		&	
		%%	

		+&	+
			&%
		+	
		%	
			%
		+	&+
			&
			&
		&	&
		+*	++
		*	
			&
		+&	*
			*
		+	*
			*
		%	&

0.01%

2023

2

2

94.12% 5.88%

1-2 2023

			%
			%
"			++
			++

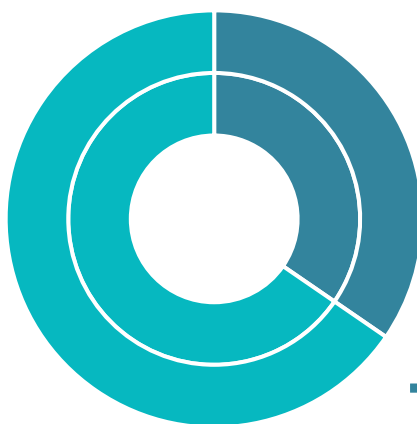
0.01%

2023

1605

3036

0.53:1



1-3 2023

1-3 2023

	10	58.82%	7	41.18%	0.70:1
	3026	65.44%	1598	34.56%	0.53:1

2023

81.02%

5.60%

1.55%

0.86%

1-4 2023

	16	94.12%	3744	80.97%	3760	81.02%
	0	0.00%	260	5.62%	260	5.60%
	0	0.00%	72	1.56%	72	1.55%
	0	0.00%	40	0.87%	40	0.86%
	0	0.00%	37	0.80%	37	0.80%
	0	0.00%	32	0.69%	32	0.69%
	0	0.00%	31	0.67%	31	0.67%
	0	0.00%	31	0.67%	31	0.67%
	0	0.00%	29	0.63%	29	0.62%

2023届毕业生就业质量年度报告

	0	0.00%	24	0.52%	24	0.52%
	0	0.00%	24	0.52%	24	0.52%
	0	0.00%	24	0.52%	24	0.52%
	0	0.00%	24	0.52%	24	0.52%
	0	0.00%	23	0.50%	23	0.50%
	0	0.00%	22	0.48%	22	0.47%
	0	0.00%	22	0.48%	22	0.47%
	0	0.00%	22	0.48%	22	0.47%
	0	0.00%	20	0.43%	20	0.43%
	0	0.00%	17	0.37%	17	0.37%
	1	5.88%	16	0.35%	17	0.37%
	0	0.00%	15	0.32%	15	0.32%
	0	0.00%	15	0.32%	15	0.32%
	0	0.00%	14	0.30%	14	0.30%
	0	0.00%	14	0.30%	14	0.30%
	0	0.00%	12	0.26%	12	0.26%
	0	0.00%	10	0.22%	10	0.22%
	0	0.00%	9	0.19%	9	0.19%
	0	0.00%	9	0.19%	9	0.19%
	0	0.00%	9	0.19%	9	0.19%
	0	0.00%	2	0.04%	2	0.04%
	0	0.00%	1	0.02%	1	0.02%
	17	100.00%	4624	100.00%	4641	100.00%

2023

4233

408

8.50% 88.24%

1-5 2023

	2	11.76%	4231	91.50%	4233	91.21%
	15					

2023 2644 56.97%
 1997 43.03%
 56.81% 100.00%



1- 4 2023

1- 6 2023

	2627	56.81%	1997	43.19%
	17	100.00%	0	0.00%
	2644	56.97%	1997	43.03%

$$\div \quad = \quad + \quad + \quad + \quad \times 100.00\%$$

2023-08-31 2023

92.14%

92.11%

100.00%



1-5 2023

2023

43.83%

31.18%

43.64%

31.27%

94.12%

1-7 2023

		0	0.00%	23	0.50%	23	0.50%
		1	5.88%	1446	31.27%	1447	31.18%
		0	0.00%	53	1.15%	53	1.14%
		0	0.00%	13	0.28%	13	0.28%
		0	0.00%	19	0.41%	19	0.41%
		0	0.00%	6	0.13%	6	0.13%
		0	0.00%	343	7.42%	343	7.39%
		16	94.12%	2018	43.64%	2034	43.83%

2023届毕业生就业质量年度报告

		0	0.00%	352	7.61%	352	7.58%
		0	0.00%	3	0.06%	3	0.06%
		0	0.00%	10	0.22%	10	0.22%
		0	0.00%	319	6.90%	319	6.87%
		0	0.00%	12	0.26%	12	0.26%
		0	0.00%	7	0.15%	7	0.15%

0.01%

2023

15

100.00%

96.86%

96.30%

1-8 2023

	25.81%	74.19%	0.00%	0.00%	0.00%	0.00%	100.00%
	11.95%	79.87%	3.14%	0.00%	5.03%	0.00%	96.86%
	7.59%	58.56%	3.50%	0.19%	29.96%	0.19%	96.30%
	9.44%	74.44%	5.00%	0.00%	10.00%	1.11%	95.00%
	55.44%	37.00%	5.44%	0.13%	1.99%	0.00%	94.43%
/	47.88%	44.63%	6.03%	0.00%	1.30%	0.16%	93.97%
	47.40%	45.09%	6.65%	0.00%	0.87%	0.00%	93.35%
	12.25%	69.80%	6.55%	0.28%	11.11%	0.00%	93.16%
	38.91%	54.07%	6.11%	0.91%	0.00%	0.00%	92.99%
	27.71%	63.86%	7.23%	0.00%	1.20%	0.00%	92.77%
	21.84%	60.92%	12.64%	0.00%	3.45%	1.15%	87.36%
	24.46%	52.88%	12.23%	2.16%	8.27%	0.00%	85.61%
	33.55%	44.52%	14.52%	0.00%	7.42%	0.00%	85.48%
	12.70%	62.30%	15.48%	0.00%	9.13%	0.40%	84.52%
	21.35%	53.65%	17.71%	0.00%	6.77%	0.52%	82.29%

0.01%

2023 2
100.00% /
100.00%

1-9 2023

	0.00%	100.00%	0.00%	0.00%	0.00%	0.00%	100.00%
/	100.00%	0.00%	0.00%	0.00%	0.00%	0.00%	100.00%

0.01%

2023 37
100.00% 100.00%
100.00%

1-10 2023

	100.00%	0.00%	0.00%	0.00%	0.00%	0.00%	100.00%

	30.26%	52.63%	6.58%	0.00%	10.53%	0.00%	93.42%
	38.91%	54.07%	6.11%	0.91%	0.00%	0.00%	92.99%
	44.34%	47.71%	7.03%	0.00%	0.92%	0.00%	92.97%

2023 92.21%

92.09%

92.18% 92.07% 100.00%

100.00%

1-12 2023

	14.29%	0.00%	27.78%	33.87%	27.73%	33.76%
	85.71%	100.00%	56.32%	51.29%	56.45%	51.45%
	0.00%	0.00%	7.38%	7.73%		

100.00% 100.00%

1-14 2023

	0.00%	50.00%	16.79%	33.16%	16.18%	33.17%
	100.00%	50.00%	64.89%	51.93%	66.18%	51.93%
	0.00%	0.00%	9.67%	7.42%	9.31%	7.42%
	0.00%	0.00%	0.25%	0.28%	0.25%	0.28%
	0.00%	0.00%	7.89%	7.09%	7.60%	7.09%
	0.00%	0.00%	0.51%	0.12%	0.49%	0.12%
	100.00%	100.00%	90.08%	92.29%	90.44%	92.30%

0.01%

2023

91.82%

92.49%

100.00%

1-15 2023

	33.38%	29.64%	5.88%	0.00%
	50.06%	56.94%	94.12%	0.00%
	7.99%	7.11%	0.00%	0.00%
	0.19%	0.40%	0.00%	0.00%
	8.22%	5.76%	0.00%	0.00%
	0.15%	0.15%	0.00%	0.00%
	91.82%	92.49%	100.00%	0.00%

2023 78.18%
78.06% 100.00%
5.67% 2.39%
2.22%

1-6 2023

2

/

/

/

2021 10

1-16 2023



86.86%

16

100.00%

1- 17 2023

	0	0.00%	14	0.51%	14	0.50%
	0	0.00%	289	10.43%	289	10.37%
	0	0.00%	61	2.20%	61	2.19%
	16	100.00%	2407	86.86%	2423	86.94%

0.01%

58.19%

3.95%

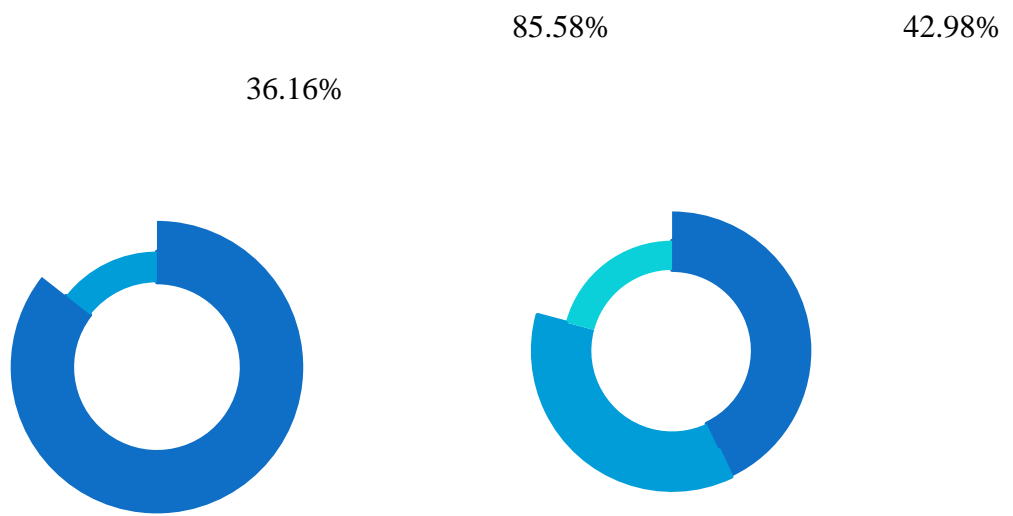
58.62%

75.00%

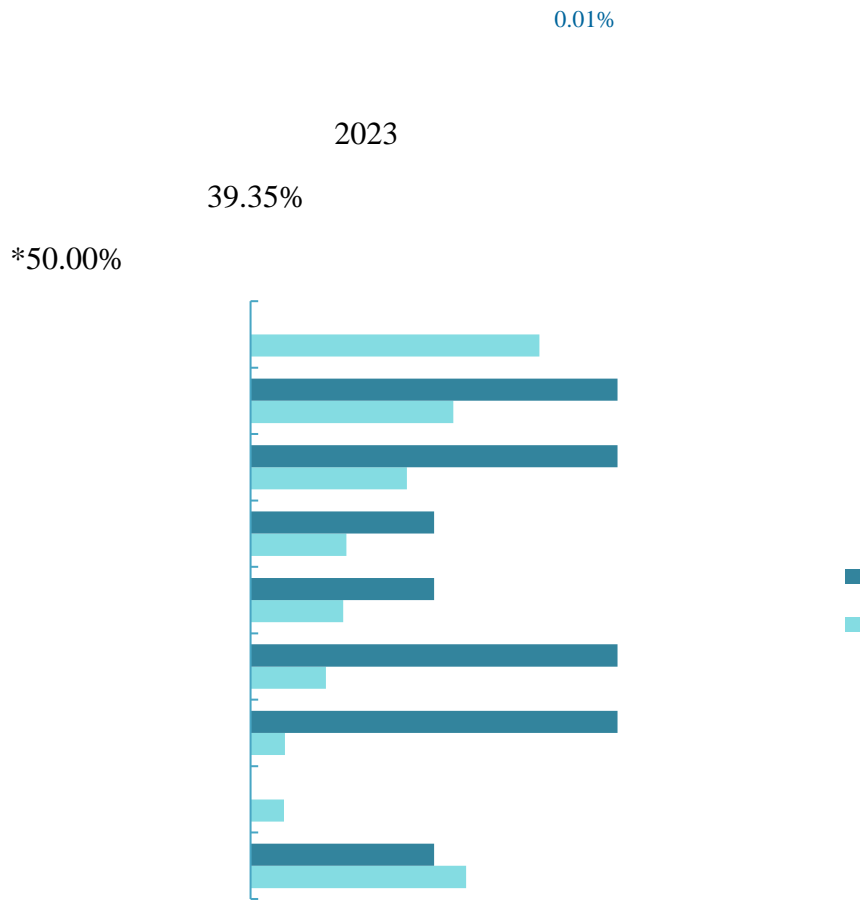
1- 18 2023

	0.00%	58.62%	58.19%
	75.00%	3.42%	3.95%
	0.00%	3.74%	3.72%
	0.00%	3.01%	2.98%
	0.00%	2.96%	2.94%
	0.00%	2.64%	2.62%
	0.00%	2.27%	2.25%
	0.00%	2.22%	2.20%
	0.00%	2.17%	2.16%
	18.75%	2.03%	2.16%
	6.25%	1.94%	1.97%
	0.00%	1.99%	1.97%
	0.00%	1.85%	1.84%
	0.00%	1.62%	1.61%
	0.00%	1.62%	1.61%
	0.00%	1.57%	1.56%
	0.00%	1.48%	1.47%
	0.00%	1.43%	1.42%
	0.00%	1.29%	1.29%
	0.00%	1.25%	1.24%
	0.00%	0.88%	0.87%

0.01%



1-7 2023



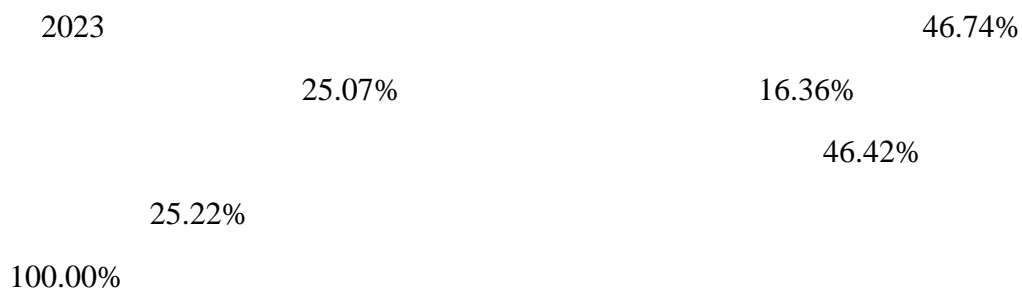
1-8 2023

-2023



1- 20 2023

	100.00%



1- 10 2023

1- 21 2023

	46.42%
	25.22%
	16.46%

	2.61%
	2.46%
	2.01%
	1.94%
	1.19%
	0.49%
	0.49%

1-22 2023

	100.00%

2023 54.86%

37.39%

55.19% 37.01%

100.00%

1-23 2023

	0.00%	55.19%	54.86%
	100.00%	37.01%	37.39%
	0.00%	1.83%	1.82%
	0.00%	1.57%	1.56%
	0.00%	1.27%	1.26%
	0.00%	1.08%	1.08%
	0.00%	0.82%	0.82%
	0.00%	0.78%	0.78%
	0.00%	0.22%	0.22%
	0.00%	0.15%	0.15%
	0.00%	0.04%	0.04%
	0.00%	0.04%	0.04%

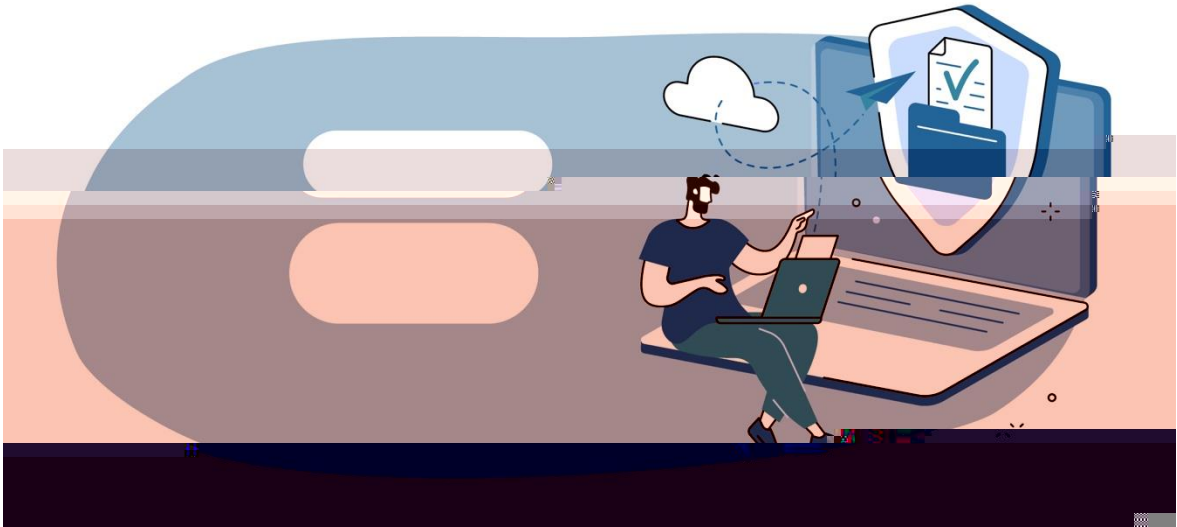
0.01%





1-11 2023

2023	1447	31.18%
	1446	31.27%
1	5.88%	



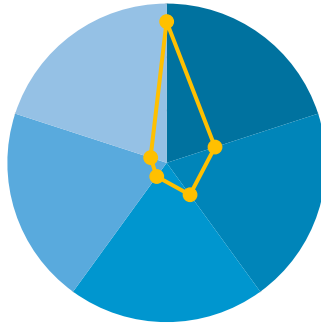
1- 12 2023

1- 25 2023

	1	5.88%
	1446	31.27%
	0.01%	



1-13 2023



1-15 2023

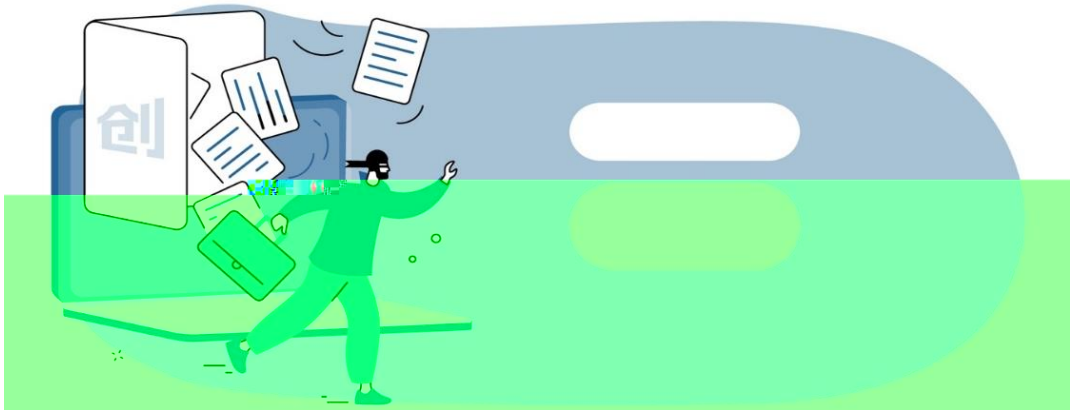
0.01%

-2023

2023

0.15%

0.15%

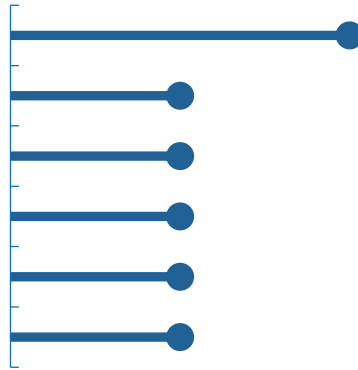


1-16 2023

1- 27 2023

	7	0.15%
	0.01%	

2023



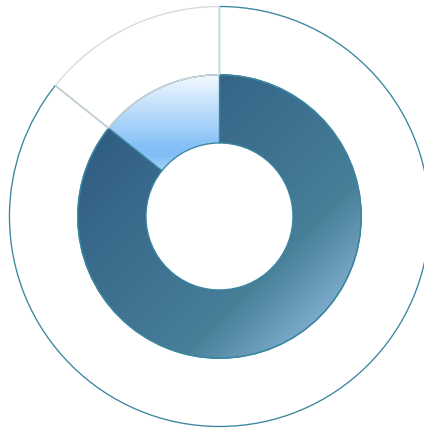
1- 17 2023

-2023

2023

*85.71%

*28.57%

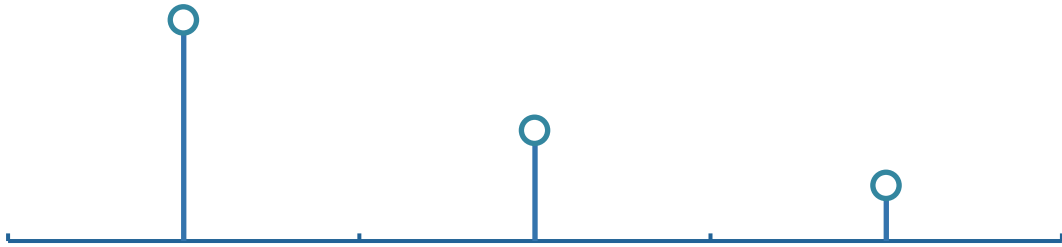


1- 18 2023

0.01%

-2023

2023



1-19 2023

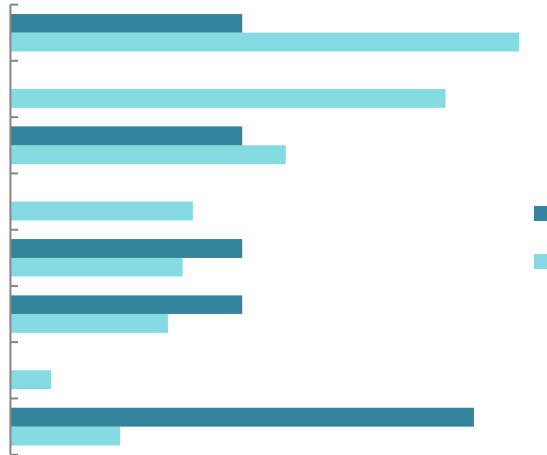
0.01%

-2023

2023

54.89%

*25.00%

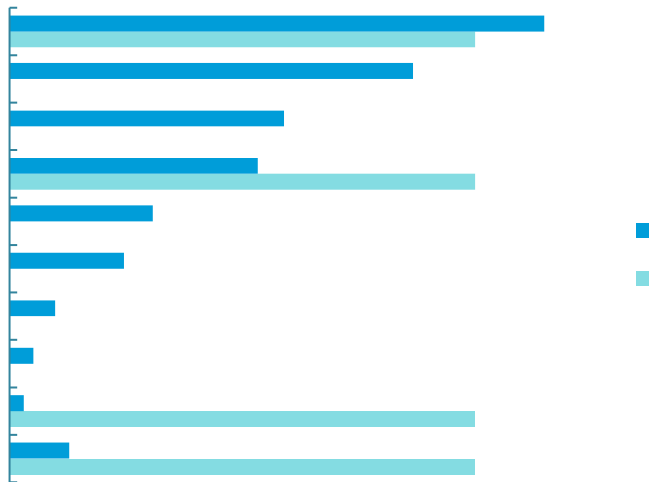


1- 20 2023

0.01%

-2023

2023
28.72%
*25.00%



1- 21 2023

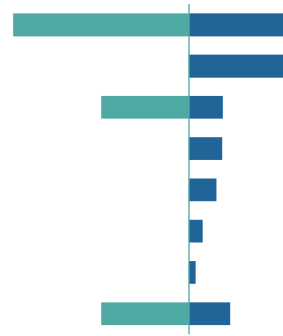
0.01%

-2023

2023

28.40%

*50.00%



1- 22 2023

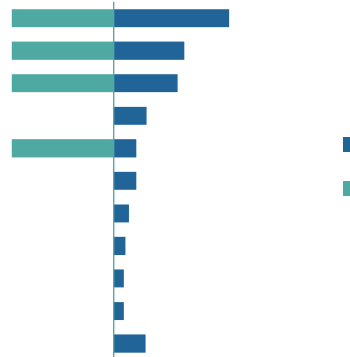
0.01%

-2023

2023

28.31%

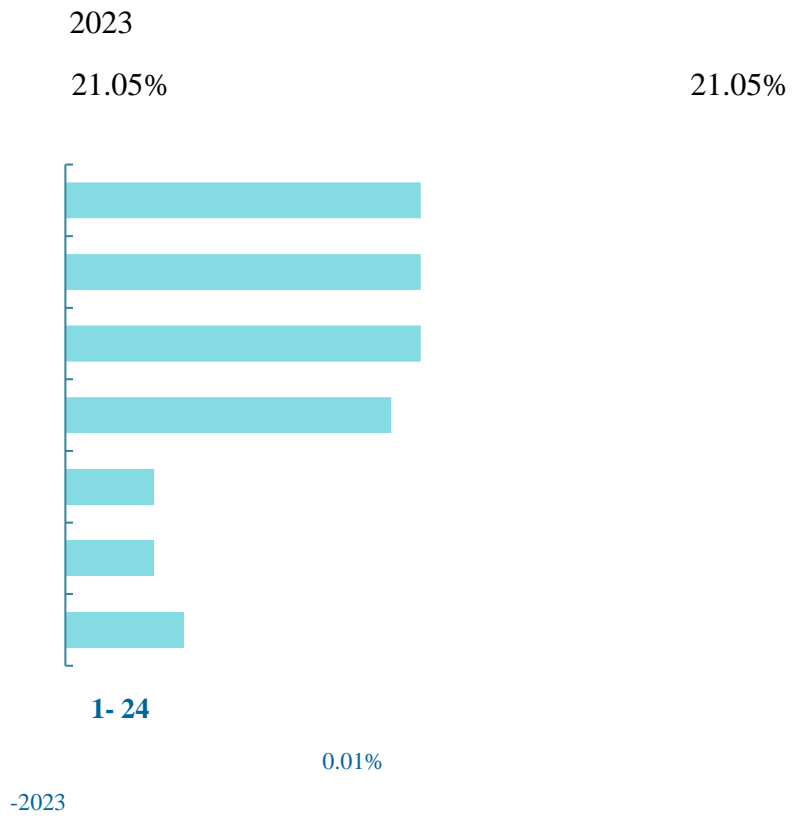
*25.00%



1- 23 2023

0.01%

-2023



2023

27.78%

